

LEGENDA  
LEGENDE

- SEMNAL DE CIRCULATIE  
MAIN SIGNAL
- SEMNAL DE MANE/RA  
SHUNTING SIGNAL
- SEMNAL AVERTIZARE RUTIERA CU SEMIBARIERA  
ROAD TRAFFIC WARNING SIGNAL WITH HALF BARRIER
- SEMNAL AVERTIZARE RUTIERA  
ROAD TRAFFIC WARNING SIGNAL
- SEMNAL DE PERICOL  
DAMAGE SIGNAL
- OPRITOR  
BUFFER STOP
- ELECTROMECANISM DE MACAZ  
ELECTROMECHANISM
- DERAILER  
DERAILER
- DULAP CU ECHIPAMENTE  
CABINET WITH EQUIPMENT
- INSULEZOR DE JONTE  
INSULATING JOINT
- JOANTA IZOLANTA FARA GABARIT  
GABOLESS INSULATING JOINT
- CUTE APARATAI PENTRU CIRCUITELE DE CALE-CAP ALIMENTARE  
TRACK CIRCUIT BOX-SUPPLY END
- TRACI DE CALE-CAP  
RECEVING END
- DISTRIBUTOR DE CABLURI  
DISTRIBUTOR BOX
- CAMERA DE TRAGERE  
TRAY
- TRASELE CABLURI IN SAPATURA  
CABLE TRENCH
- CANAL DE CABLURI  
CABLE DUCT
- SUBTRAVERSARE  
CABLE JUNCTION
- SUBTRAVERSARE  
CABLE JUNCTION

NUMARUL CABLULUI PRINCIPAL  
NUMBER OF THE PRINCIPAL CABLE

NUMARUL CABLULUI SECUNDAR  
NUMBER OF THE SECONDARY CABLE

Show the end of the station where to use the cable

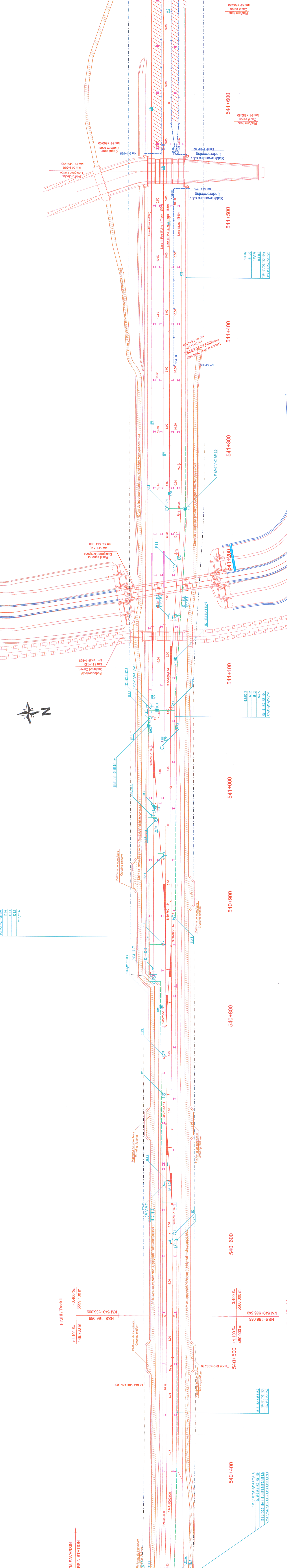
- 1 Cablu in capatul X al statiei  
Cable in X end of the station
  - 2 Cablu in capatul Y al statiei  
Cable in Y end of the station
- Reprezinta instalatiile de semnalizare pentru care este folosit cablul  
Shows the signalling equipment where the cable is used

- 1 Cablu pentru electromecanismul de macaz  
Cable for the point mechanism
- 2 Cablu pentru derailer  
Cable for the track derails
- 3 Cablu pentru circuitele de cale - cap alimentare  
Cable for the track circuits - receiving end
- 4 Cablu pentru semnale de circulatie si manevra  
Cable for the entry signals and shunting signals
- 5 Cablu pentru semnale de pericolas si ALC  
Cable for the entry signals, ABL and ALC

Reprezinta numarul de ordine al cablului principal  
Shows the current number of the principal cable

Reprezinta numarul de ordine al cablului secundar  
Shows the current number of the secondary cable

BALIZA RADIO CAIE INDICA LIMITA ZONEI ETCS L2  
ETCS L2 END OF MISSION ANNOUNCEMENT BALISE



Index	Date	Description	Signature	Signature
E				
D				
C				
B				
A				

PROIECTANT / DESIGNER:	Date / Date	Semnatura / Signature
POYRY	01.2013	C. Teodorescu
	01.2013	R. Trommer

Subcontractant / Subcontractor	Approved	Projectat	Designed
MIOTOP	A.M. Balicu	A. Sopot	

Revisia / Revision	Cod desen / Drawing Code	Nr / No
1/16.05.2013	PT.02.05.14.SM.006	05/10

Scara / Scale	Revizita / Revision	Cod desen / Drawing Code	Nr / No
1:1000	1/16.05.2013	PT.02.05.14.SM.006	05/10

Project 91	Faza / Phase:
35371.1	PTH +CS / TD + TS

Reprezinta numarul de ordine al cablului principal	Reprezinta numarul de ordine al cablului secundar
150, 151, 152, 153, 154, 155, 156, 157, 158, 159	101, 102, 103, 104, 105, 106, 107, 108, 109, 110, 111, 112, 113, 114, 115, 116, 117, 118, 119, 120, 121, 122, 123, 124, 125, 126, 127, 128, 129, 130, 131, 132, 133, 134, 135, 136, 137, 138, 139, 140, 141, 142, 143, 144, 145, 146, 147, 148, 149, 150, 151, 152, 153, 154, 155, 156, 157, 158, 159